

# SEA VIEW CONDOMINIUM

PATONG PHUKET

**ABOV**  
PATONG



# PHUKET 2025



## SURFING



## LIFESTYLE



## EXPERIENCES

### WHY PHUKET , WHY NOW

- ✓ **Phuket is Thailand's fastest-growing real estate market.**
- ✓ **Patong is the epicenter of high-end tourism and investment.**
- ✓ Property prices remain highly competitive compared to other global hotspots.
- ✓ Rental yields reach up to **15% annually**, outperforming many international markets.
- ✓ Opportunity to have properties managed by **world-renowned hotel brands.**
- ✓ Stable currency, investor-friendly regulations, and cost-effective living expenses.
- ✓ A booming economy with continuous **land appreciation potential.**

**If you're seeking a high-yield investment, Patong, Phuket is the ultimate opportunity.**



**EIA**  
APPROVED

## **ABOV PATONG**

**DEVELOPER** : ABOVE PATONG RESIDENCE CO., LTD.  
**LOCATION** : PATONG ROAD, KATHU, PHUKET 83150  
**PROJECT AREA** : 14-0-19.47 RAI (22,477.90 SQ.M.)  
**ROOM TYPE** : FULLY FURNISHED  
**BUILDING TYPE** : LOW-RISE, 13 BUILDINGS  
**TOTAL UNITS** : 494 UNITS  
**UNIT TYPE** : 1 BEDROOM AND 2 BEDROOMS  
**PARKING** : 58% (291 CARS BASEMENT)  
**PROJECT STATUS** : UNDER CONSTRUCTION



EIA  
APPROVED



# FACILITIES

Clubhouse

Indoor/outdoor restaurant and lounge

Fitness center

Cinema room and karaoke

26 m. Swimming pool with salt-water chlorination system. Kids 'pool with splash pad and kids experience area Land scape garden/ Yoga pier

Lobby and receptionist

Co working space

uristic office/Mail rooms



**ABOV**  
PATONG



**MAIN LOBBY**

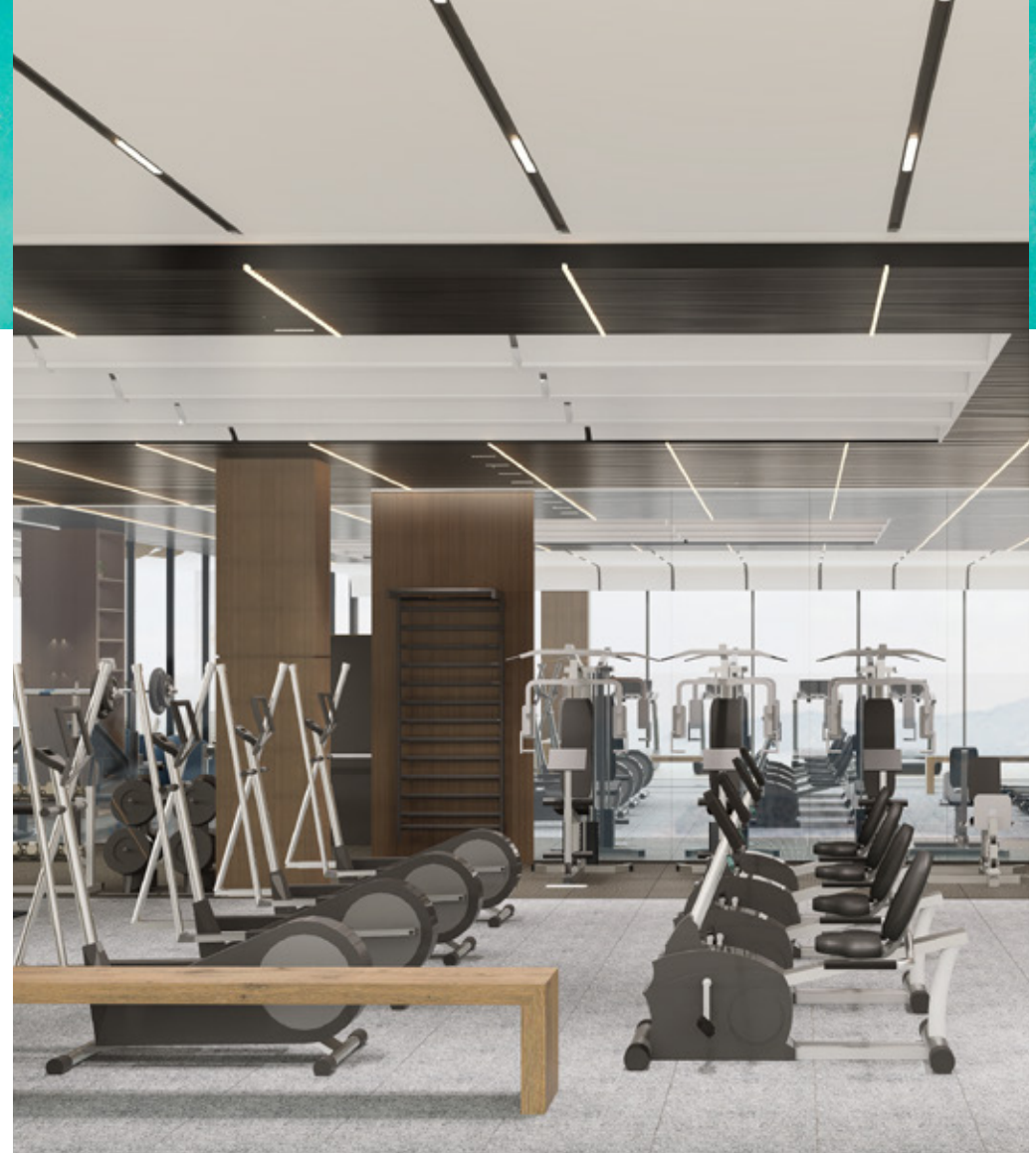
# RESTAURANT



## CO-WORKING SPACE



## FITNESS





**KARAOKE ROOM**

# THEATER ROOM





**TERRACE**



## Car Parking

- Up to 291 spaces with 5 automatic parking, 2 spaces on ground and 3 spaces of accessible parking.
- Comfortable size parking slot, up to 2.5 m. x 5.5 m.
- EV charger spaces.



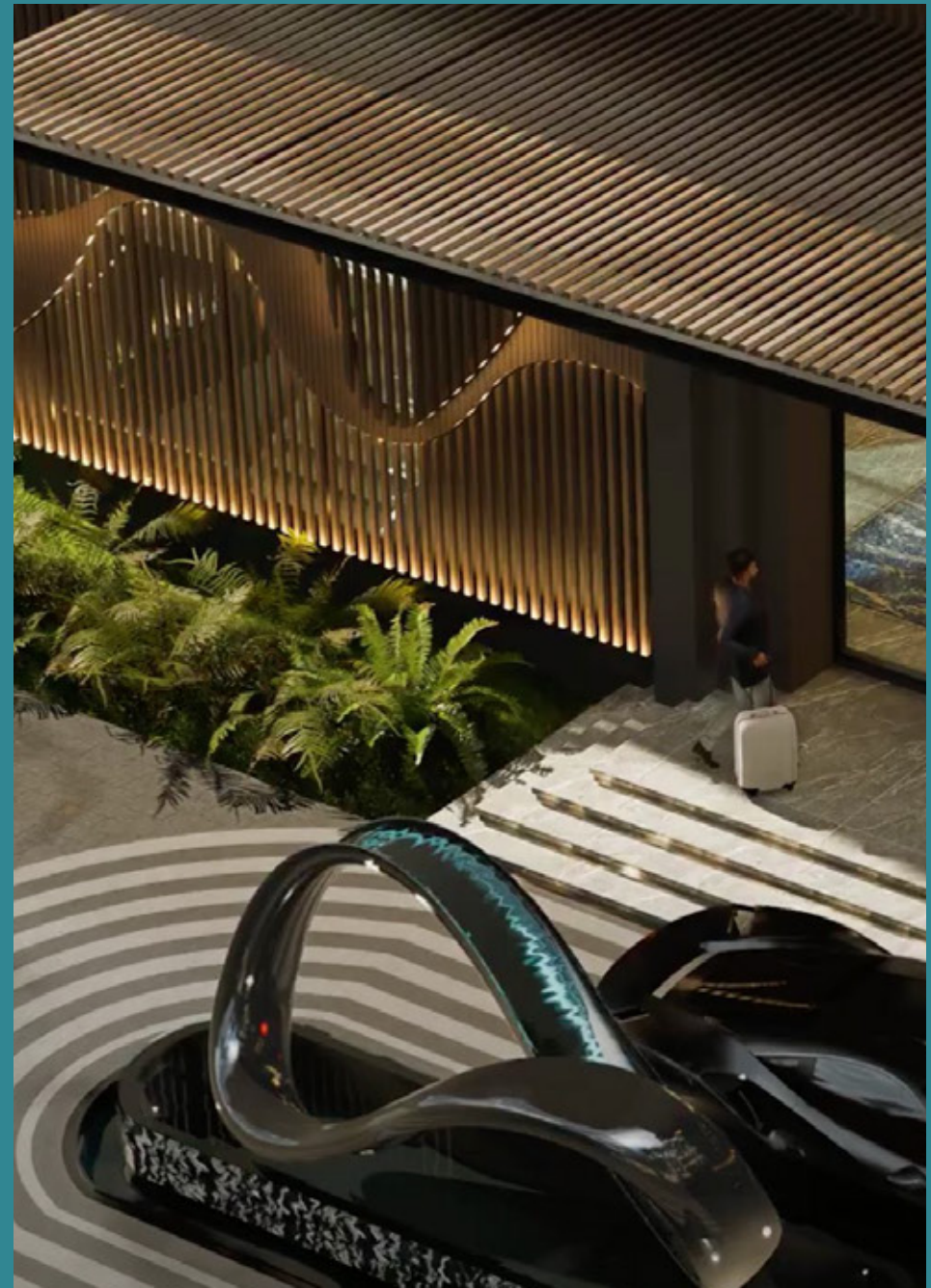
## Fire Protection

- Fully addressable fire alarm, fire hose cabinets, fire extinguishers and emergency light.
- Fully automated fire prevention and suppression with smoke/heat detectors and sprinkler system throughout the residential buildings.



## Electrical and Security System

- Advanced access control with security card access to main lobbies and in lifts.
- 24 hours on site security guards, with CCTV monitoring and recording.
- Energy efficient LED down lights in all units.
- Individual electrical meter for all residential units.
- Emergency power supply for common areas, essential systems and all elevators.
- Standby generator with over 8 hour emergency supply capability.
- Battery emergency lighting in each residential unit (room entrance).



**ABOV**  
PATONG

**SEA VIEWS CONDOMINIUM**  
PATONG PHUKET

LARGE LIVING AREA  
WITH BALCONY  
ENJOY SEA & NATURE VIEW





2 BEDROOMS  
from 110 - 112 sqm.

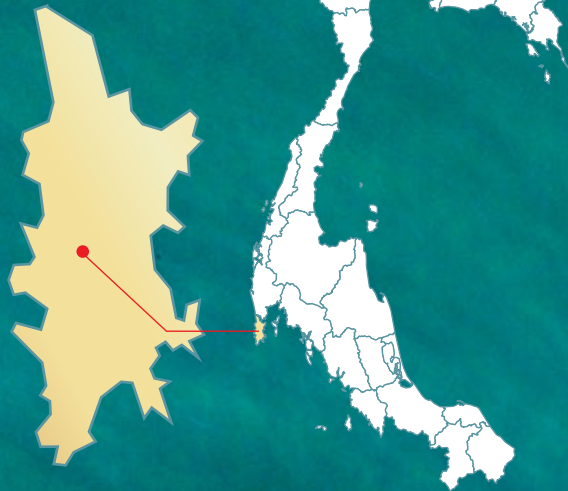
Indoor	83.07	sq.m.
Balcony	29.60	sq.m.
Total	112.67	sq.m.



1 BEDROOM  
from 42 - 65 sqm.

Indoor	42.88	sq.m.
Balcony	15.83	sq.m.
Total	58.71	sq.m.

**PHUKET  
THAILAND**



**Invest in Above Patong Residence today – where luxury, prime location, and financial opportunity come together to create the ultimate real estate investment.**

- ✓ Prime Location – Just **150 Meters** from Patong Beach
- ✓ A Global Tourist Hotspot with High Occupancy Rates Year-Round
- ✓ Luxury Living – A Perfect Blend of Elegance and Nature
- ✓ High-Income Potential with World-Class Hotel Management
- ✓ Premium Architecture & World-Class Amenities
- ✓ Foreign Investor-Friendly Ownership & Tax Benefits
- ✓ Competitive Pricing with High Growth Potential

## LOCATION : PATONG THE MOST PRESTIGE AREA OF THE ISLAND

150 m. to Patong Beach  
1.8 km. to Freedom Beach  
4.0 km. to Paradise Beach  
6.8 km. to Karon Beach

---

1.5 km. to Bangla road  
1.7 km. to Kudo Beach Club  
3.0 km. to Fuga Beach Club

---

2.0 km. to Central Patong  
2.1 km. to Jungceylon

---

2.6 km. to Patong Hospital  
12 km. to QSI International School  
35 km. to Phuket International Airport





Line Oa



WhatsApp



WeChat



+66 926659679



sales@abov.co.th



+662 026 6658



www.abov.co.th